

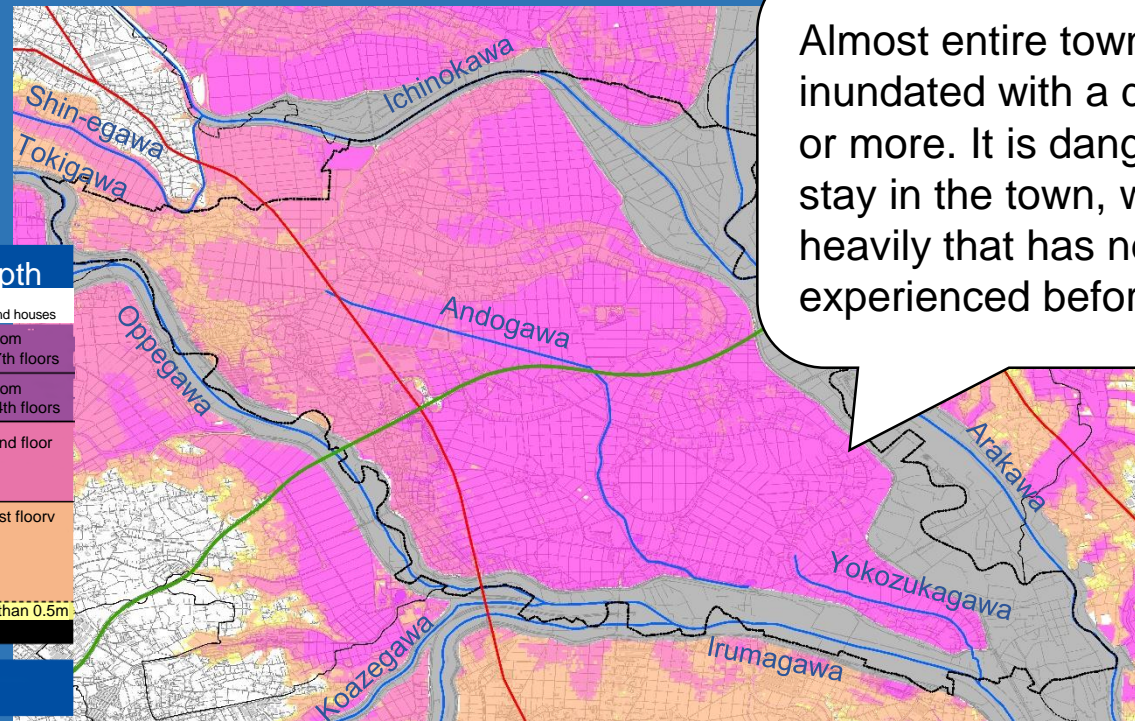
Outline of hazard map for flood and earthquake, (Compilation of flood.)

Kawajima town is surrounded by rivers on all four sides; the Arakawa, Tokigawa, Irumagawa and Ichinokawa.

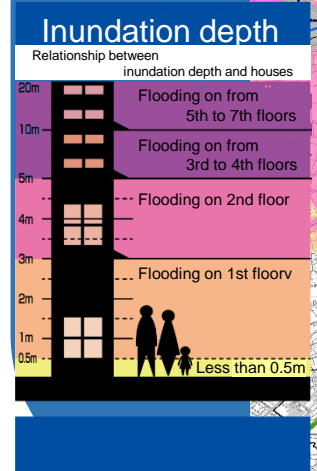
Because of the flat land unprecedented heavy rain can cause damage with large scale floods.

Almost the entire town flooded with the depth of 3m or more.

The entire town will be inundated and many will be flooded to a depth of 3m to less than 10m.



Almost entire town will be inundated with a depth of 3m or more. It is dangerous to stay in the town, when it rain heavily that has never been experienced before.



The entire town will be inundated and many will be flooded to a depth of 3m to less than 10m.

※When the Arakawa has a total rainfall of 632mm for 3 days, and the Irumagawa basin has a total rainfall of 819mm for 2 days.

Staying in town is dangerous. ⇒ Evacuate out of the town.

Staying in town is dangerous as the entire town can be flooded. When a large typhoon is expected to approach, refer to the order of priority for evacuation destinations on the right and evacuate outside the town as soon as possible.

Priority order of evacuation destinations

- 1** To relative's and acquaintance's houses outside the town. 《Out of town》
Voluntarily evacuate to a relative's or acquaintance's houses or accommodations outside the town where there is no risk of flooding.
- 2** Go to the out-of-town evacuation site with which the town agreement has been concluded. 《Out of town》
Evacuate to an out-of-town evacuation site with which the town has concluded an agreement.
※The parking lot become the evacuation area, temporary evacuate in the car.
- 3** Emergency evacuation site in town. 《Emergency response in town》
Those who find it difficult to evacuate outside the town or who are too late to evacuate should evacuate to an emergency evacuation site within the town as an emergency measure.

A list of out-of-town evacuation sites with which town agreements has been signed.

A number	Name of facilities	A location
1	COEDO CRAFT brewery	1352, Ooya, Higashimatsuyama city
2	NOAH Higashimatsuyama branch	3001-2, Haneo, Namegawa town
3	Parlor EX Namegawa Branch	225-1, Haneo, Namegawa town
4	Estadio Higashimatsuyama Branch	1687-2, Ishibashi, Higashimatsuyama city
5	Matsuyama Public Girl's High School in Saitama Prefecture	2-22, Izumityo, Higashimatsuyama city
6	Yamamura Junior college	604, Ishizaka, Hatoyama town
7	National Musashi Kyuryo Shinrin park	1920, Yamada, Namegawa town
8	Saitama Prefectural kid's animal nature park	554, Iwadono, Higashimatsuyama city
9	Daitou Cultural University Midoriyama campus	Hatatedai3, Higashimatsuyama city
10	D STATION Sakado branch	1446-1, Tsukagoshi, Sakado city
11	Tsurugashima Greenpark	1211, Ootagaya, Tsurugashima city
12	Daiichi plaza Sakado 1000	1300, Tsukagoshi, Sakado city
13	Hayworld	6-87, Fukai, Kitamoto city
14	Midorino oka asuka Higashimatsuyama	1538-1, Ooya, Higashimatsuyama city

